

MAXIMISE SALES AND MINIMISE COSTS

**maslen**  
AUSTRALIA

INNOVATION IN REFRIGERATION

Specialist Glass Door Insert Manufacturer

●●●●● Slimline Insert Doors



LEADING THE INDUSTRY IN ENERGY EFFICIENCY

Customer Support

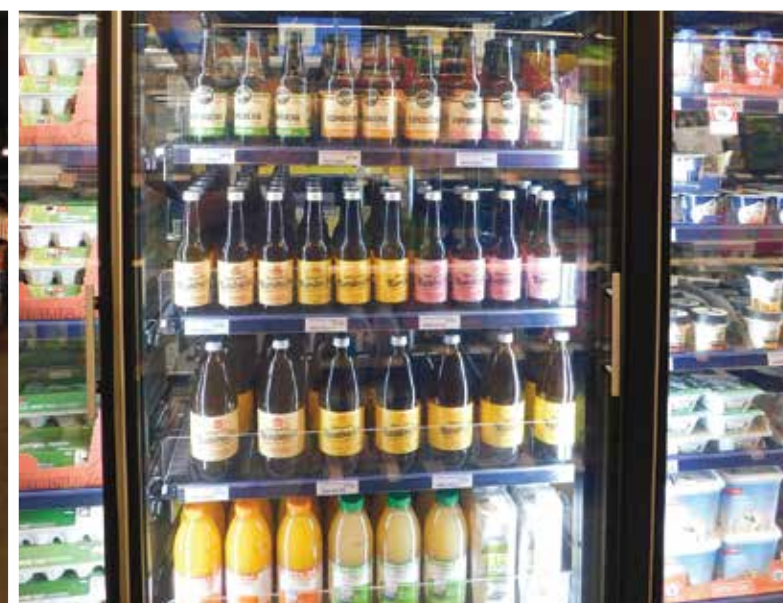
Technical Advice

Design Advice

If you require support or advice, please contact Maslen Australia

[www.maslen.com.au](http://www.maslen.com.au)





## Standard Features:

- Dramatic improvement in product visibility over greater distances (compared to conventional glass doors)
- Tropical Highlight Inserts
- Double Glazed, Heat Glass & Frame
- Sealed glass unit with ALL toughened safety glass, warm edge technology, gas filled, heat reflective glass, anti-fog coat inside
- Increase viewing angle
- LED Lighting mini mullion

## Options:

- Available in our full range of door heights and widths
- Available in various durable powder coat finishes
- Shelving options, four post shelving, T post system and Cantilever shelving

*Email enquiries@artmaslen.com.au*

**QUEENSLAND**  
**SALES & FACTORY**  
 SUNSHINE COAST  
**Free Call 1800 627 536** (within Australia)  
**p 07 5491 6188**  
 e enquiries@maslen.com.au

**WESTERN AUSTRALIA**  
**SALES & FACTORY**  
**p 08 9302 3270**  
 e enquiries@maslen.com.au



**Proudly  
 Australian  
 Designed,  
 Owned and  
 Manufactured**